



Rx PROVISIONALS

706 W. Broadway Blvd, #201,
Glendale, CA 91204

• 888-805-0808 • 747-268-0808

smilespecialist@usdentallab.net

Dr. Name _____ Phone # _____

Acct. # _____ Patient Name _____
First Last

Address/Email _____ Deliver by 5 p.m. on _____

Enclosed with Case: ☐ Impressions ☐ Models ☐ Bite ☐ Photos ☐ Other: _____

TOOTH NUMBER #(s) _____ to _____

Abutment** #(s) _____

Pontic #(s) _____

Extract #(s) _____

Veneer #(s) _____

Splinted** #(s) _____

Individual units #(s) _____

Amount of Prep Reduction:

☐ 1 mm** ☐ 2 mm

☐ Open Trench #(s) _____

SELECT INCISAL EDGE TYPE



☐ Rounded ☐ Squared ☐ Pointed

SELECT PONTIC DESIGN TYPE



Mod RidgeLap

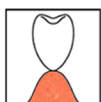
☐

RidgeLap

☐

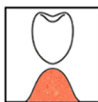
Ovate

☐



Bullet

☐



Hygienic

☐

☐ Perio treatment: Prepare tooth
below gingival on
tooth #(s) _____ by _____ mm

☐ Perio site healing: Prepare ovate socket
on tooth #(s) _____ by _____ mm

PROVISIONALS SHADE



Indicate Shade Here

CHOOSE RESTORATION

☐ BioTemps Provisionals

Reinforcement:

☐ None ☐ Wire** ☐ Fiber

☐ Cast-Metal Substructure + 1 working day

☐ Cement-on Implant #(s) _____

☐ Screw-retained Implant #(s) _____

☐ Transition Crowns & Bridges

- Transition C&B are milled from an acetal resin block (No reinforcement)

Fabricate:

☐ Lab Prep

☐ Solid Model

☐ Die-Trim Model

☐ Cement-on Implant #(s) _____

☐ Screw-retained Implant #(s) _____

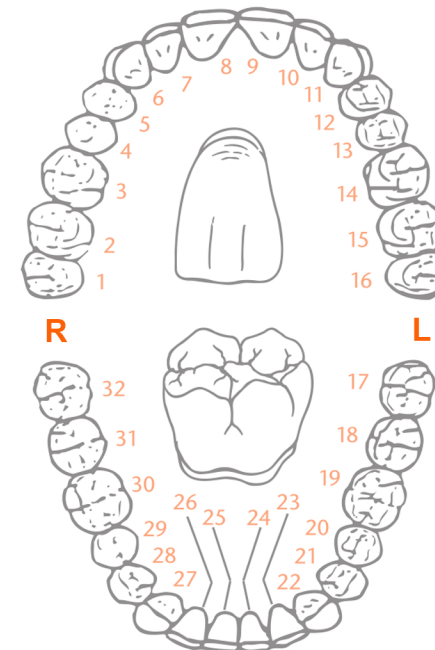
☐ Smile Transitions

☐ Upper ☐ Lower

☐ Fabricate with occlusal holes

☐ Open bite _____ mm anteriorly

☐ Add length to gingival on tooth
#(s) _____ by _____ mm



Signature _____

Submission of this Rx constitutes agreement with limited warranty terms and conditions. See reverse for details.

License # _____ Date _____

TERMS AND CONDITIONS

All Restorations Made in the USA



TERMS: Cost of collection of any account will be paid by the customer. All accounts are payable within 30 days of statement date. **Accounts not paid within the stated terms will be subject to COD status and a late charge of 3 percent of the unpaid balance.** \$59 NSF fee will apply for returned checks. Prices subject to change without notice. Rx must be enclosed with original case submission.

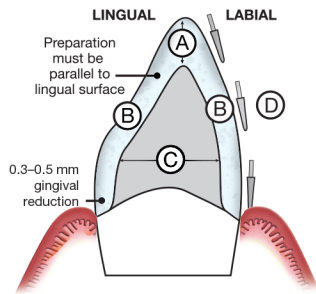
NO-FAULT REMAKE POLICY: USD Lab is pleased to process all remakes or adjustments at no additional charge if requested within the warranty period and **accompanied by the return of the original appliance.**

LIMITED WARRANTY/LIMITATION OF LIABILITY. For warranty terms and conditions and limitation of liability, visit

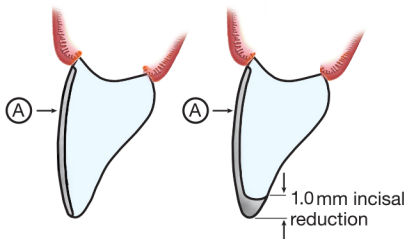
- **BioTemps, Limited Warranty**
- **Transition Crowns & Bridges, Limited Warranty**

PREPARATION GUIDELINES

ANTERIOR

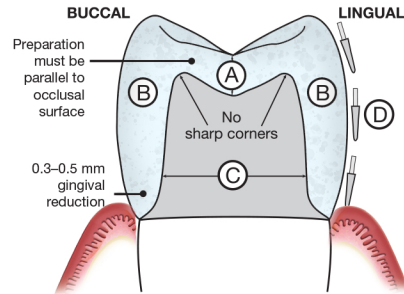


- A. 1 mm incisal reduction
- B. 0.8 mm middle third reduction
- C. Labial and lingual walls must be convergent
- D. Preparation should be cut in three planes



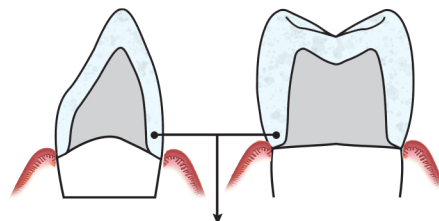
- A. 0.3 to 1.0 mm labial reduction

POSTERIOR



- A. 1 mm occlusal reduction
- B. 0.8 mm middle third reduction
- C. Buccal and lingual walls must be convergent
- D. Preparation should be cut in three planes

LABIAL OR 360° MARGIN



- 0.3-0.5 mm gingival reduction using rounded shoulder margin design

IN-LAB WORKING TIMES

Please allow full working time for each product selected. Working times are NOT guaranteed and do NOT include weekends or holidays.

BioTemps Provisionals	5 working days
w/ cast-metal frame or	
cast-metal reinforcement over implant.....	6 working days
w/ cast-metal substructure.....	6 working days
screw-retained over implant.....	6 working days

Transition Crowns & Bridges	6 working days
over implant.....	6 working days

Smile Transitions 7 working days

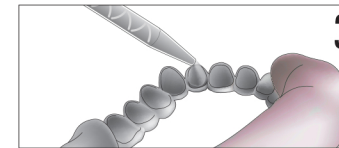
Rush service available. Call for details.

PROVISIONALS RELINE INSTRUCTIONS

For best results, reline provisionals with a methyl methacrylate acrylic reline material (i.e., Luxatemp® Ultra by DMG America, Jet® by Lang, Coldpac by Yates Motloid or Palavit® 55 by Kulzer). Other reline materials should be avoided. However, if used, mechanical undercuts must be cut into the abutment shells for better retention of the reline material.



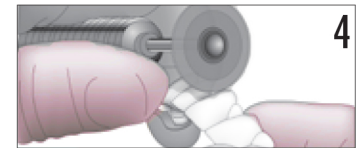
- Try in the restorations. If any adjustment is needed to seat the restoration, use a low-speed carbide or composite finishing bur.
- Rinse with water and dry completely.



- Apply a minimal amount of reline material to the intaglio of the provisional. Use the mix tip to coat the inner walls with the material and evacuate any trapped air bubbles or voids.
- Do not allow the reline material to fully cure on the preparations due to heat generation, which may cause injury to the pulp.
- Gently work the provisional on and off the preps, allowing them to bench cure.



- Apply a thin layer of petroleum jelly to the outer surface of the restoration to prevent excess reline material from sticking.
- Reline provisionals by blocking out any undercuts on the preparations.



- Trim away any flash or excess acrylic using a plastic grinding disc.
- Provisionals can be polished with pumice and polishing paste or sealed with a light-cured glaze (e.g., Palaseal®, Kulzer).
- Cement provisionals using a non-eugenol temporary cement if higher retention is needed, Neo-Temp™ by Waterpik can be used.